



Our conference offer for you

ALL PACKAGES CONTAIN

Standard technology (beamer, screen, flipchart, metaplan board)
Smartboard
Metaplan case

Free parking in the RheinCenter multi-storey car park from the 6th floor upwards.

Alternatively, we can reserve a parking space in the entrance area for € 10.00 per night, subject to availability.

ROOM RENT ALL DAY

| | |
|---|------------------|
| Meeting room "Basel" (up to 50 persons, approx. 90 sqm) | 250.00 € per day |
| Meeting room "Freiburg" (up to 25 persons, approx. 40sqm) | 160.00 € per day |

Our meeting rooms are air-conditioned, with daylight and can be darkened.

ROOM RENT HALF DAY(08:00 - 13:00 OR 13:00 - 18:00)

| | |
|---|--------------------|
| Meeting room "Basel" (up to 50 persons, approx. 90 sqm) | 150.00 € per ½ day |
| Meeting room "Freiburg" (up to 25 persons, approx. 40sqm) | 90.00 € per ½ day |

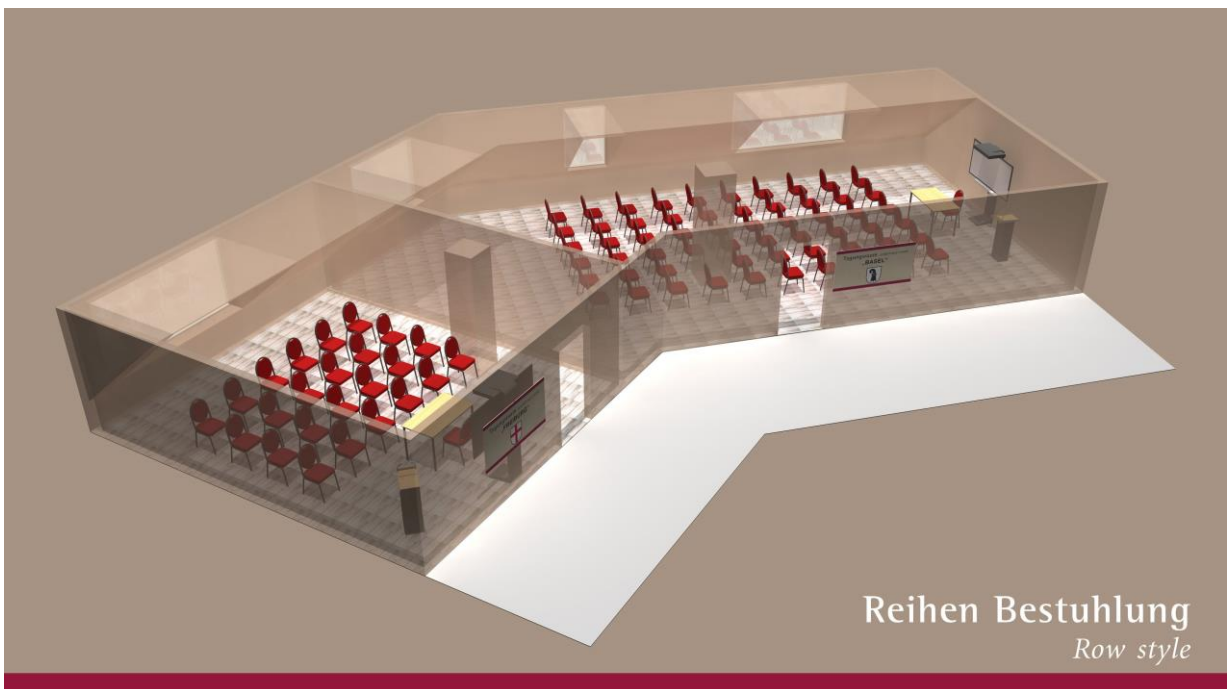
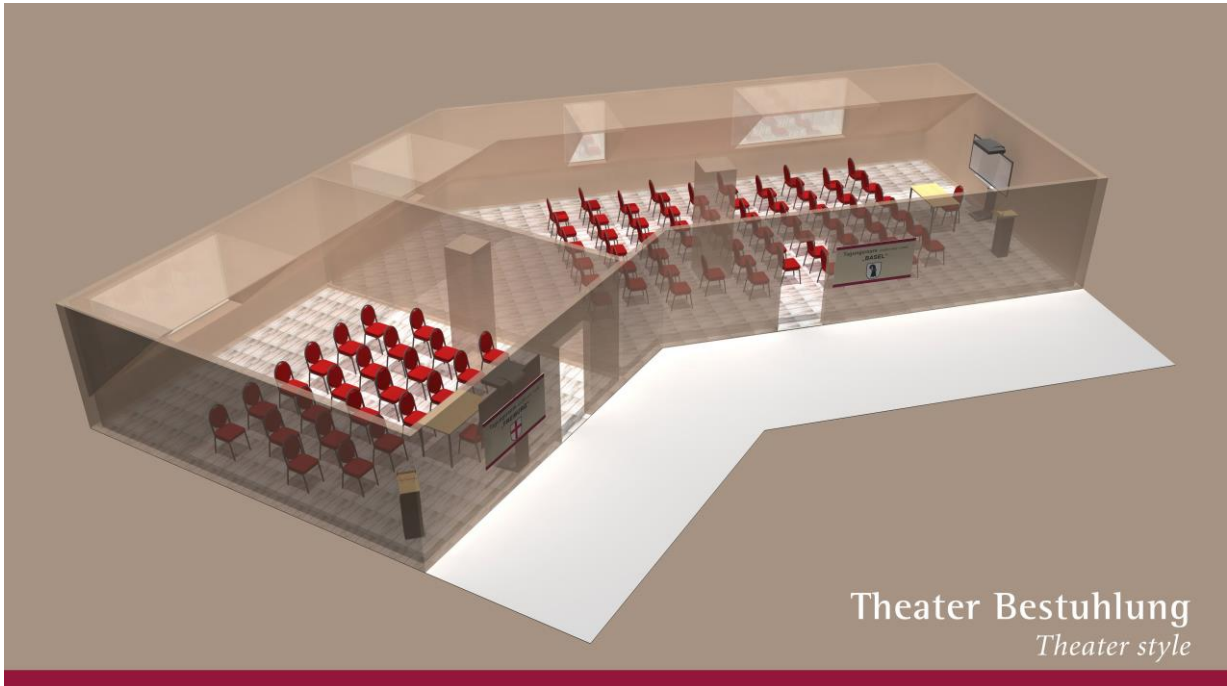
The maximum number of persons depends on the desired seating arrangement.

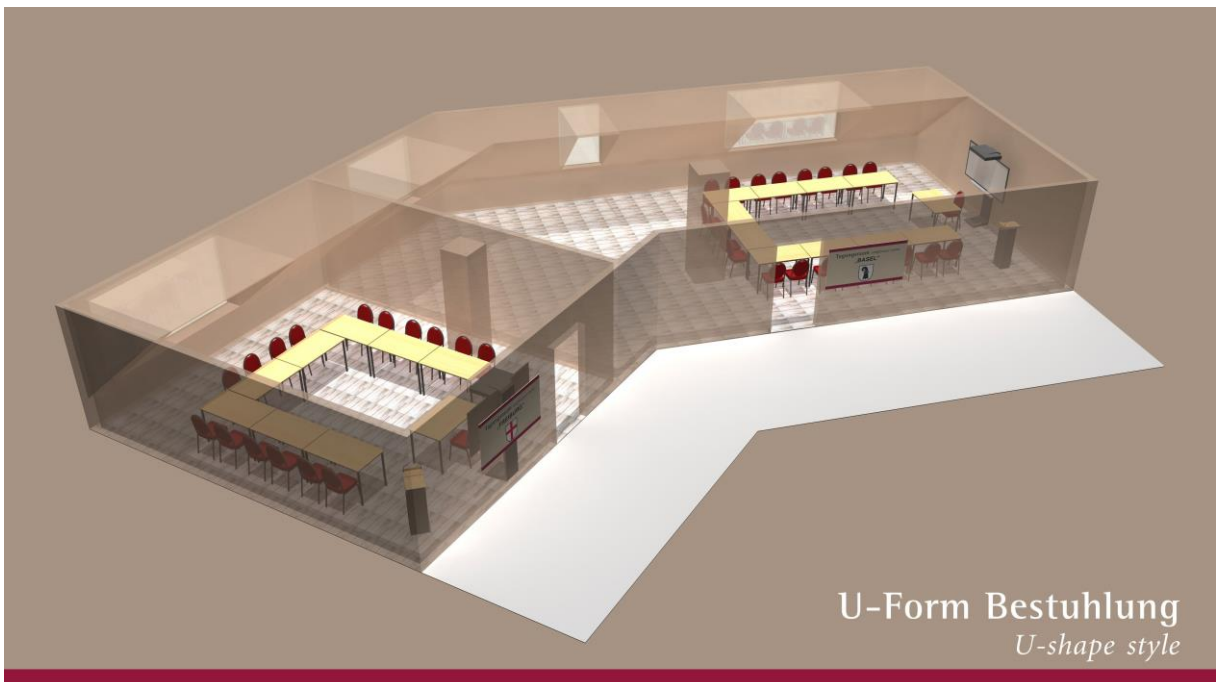
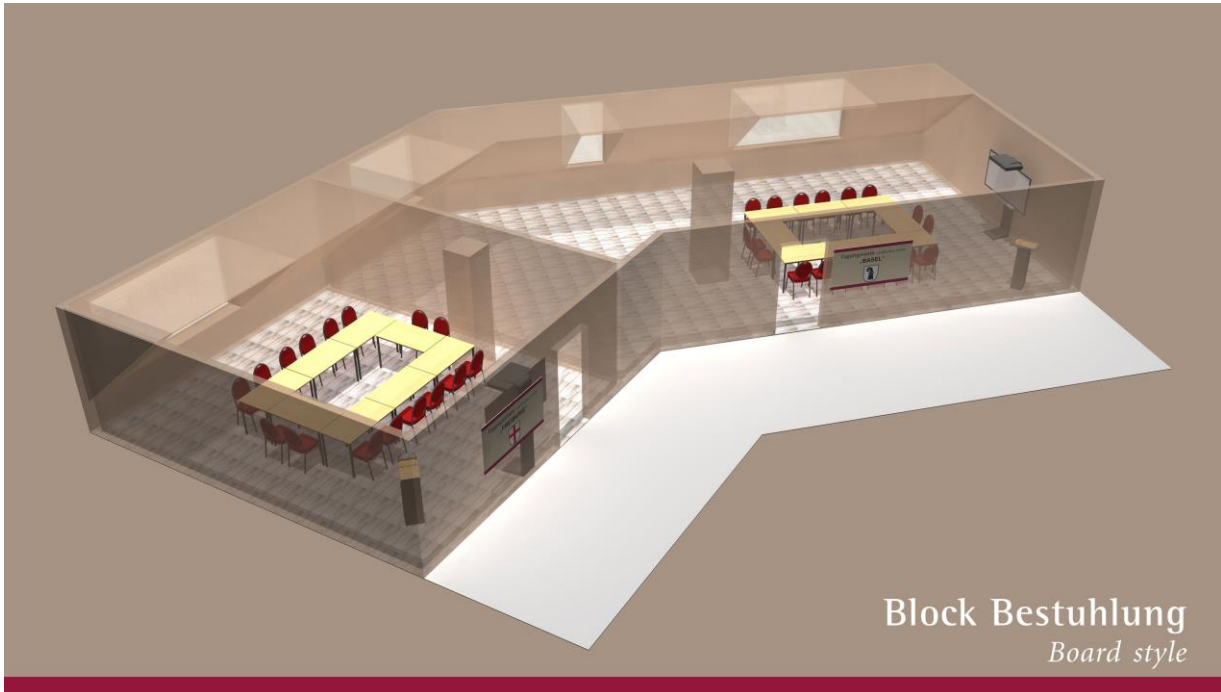
On the following pages you can see sketches of our conference rooms with different seating arrangements. The conference room on the left is called "Freiburg" and the conference room on the right "Basel".

All prices include service charge and statutory VAT.

Do you have any further questions? Feel free to contact us by e-mail or phone.

We look forward to your reservation!
Your Best Western Hotel Dreiländerbrücke Team







HALF DAY PACKAGE „TÜLLINGER BERG“

PRICE PER PERSON
38,50 €

- Unlimited conference drinks
0.33l Coca-Cola, 0.25l Schwarzwaldsprudel, 0.2l orange and apple juice each
- Coffee break before in the morning or in the afternoon with fruit and pastries or cake
- Lunch at the beginning or end of the event
2-course menu with a choice of two main courses

HALF DAY PACKAGE „MORGENSTREICH“

PRICE PER PERSON
45,50 €

- Welcome coffee
Coffee and tea
- Unlimited conference drinks
0.33l Coca-Cola, 0.25l Schwarzwaldsprudel, 0.2l orange and apple juice each
- Coffee break before in the morning or in the afternoon with fruit and pastries or cake
- Lunch at the beginning or end of the event
2-course menu with a choice of two main courses
- 1 soft drink per person with the meal
0.33l Coca-Cola, 0.25l Schwarzwaldsprudel, 0.2l orange and apple juice each

FULL-DAY PACKAGE „RHEINCENTER“

PRICE PER PERSON
47,50 €

- Unlimited conference drinks
0.33l Coca-Cola, 0.25l Schwarzwaldsprudel, 0.2l orange and apple juice each
- Coffee break in the morning with fruit and pastries or cake
- Lunch at the beginning or end of the event
2-course menu with a choice of two main courses
- Coffee break in the afternoon with fruit and pastries or cake



FULL-DAY PACKAGE „RHEINBLICK“PRICE PER PERSON
58,00 €

- Welcome coffee
Coffee and tea
- Unlimited conference drinks
0.33l Coca-Cola, 0.25l Schwarzwaldsprudel, 0.2l orange and apple juice each
- Coffee break morning "Fit and Vital" with raw vegetable sticks & dip, Bircher muesli and multigrain breads with sandwiches
- Lunch at the beginning or end of the event
2-course menu with a choice of two main courses
- 1 soft drink per person with the meal
0.33l Coca-Cola, 0.25l Schwarzwaldsprudel, 0.2l orange and apple juice each
- Coffee break in the afternoon with fruit and pastries or cake

FULL-DAY PACKAGE INCL. DINNER „DREILÄNDERBRÜCKE“PRICE PER PERSON
79,00 €

- Welcome coffee
Coffee and tea
- Unlimited conference drinks
0.33l Coca-Cola, 0.25l Schwarzwaldsprudel, 0.2l orange and apple juice each
- Coffee break morning "Fit and Vital" with raw vegetable sticks & dip, Bircher muesli and multigrain breads with sandwiches
- Lunch at the beginning or end of the event
2-course menu with a choice of two main courses
- 1 soft drink per person with the meal
0.33l Coca-Cola, 0.25l Schwarzwaldsprudel, 0.2l orange and apple juice each
- Coffee break in the afternoon with fruit and pastries or cake
- Dinner
3-course menu with a choice of two main courses, buffet for 20 or more people



YOUR INDIVIDUAL YOUR CONFERENCE PACKAGE

PRICE PER PERSON
AND BREAK

- | | |
|--|---------|
| • Welcome coffee with coffee and tea in the room | 4,50 € |
| • Coffee break with fruit and pastries or cake | 9,50 € |
| • Coffee break "Fit and Vital" with raw vegetable sticks & dip, Bircher muesli and multigrain breads with toppings | 11,50 € |
| • Lunch 2-course menu with a choice of two main courses, buffet for 20 or more people | 20,00 € |
| • Dinner 3-course menu with a choice of two main courses, buffet for 20 or more people | 28,00 € |

BRINGEN SIE ABWECHSLUNG IN IHRE PAUSEN!

- | | |
|--|--------|
| • Yoghurt natural | 1,80 € |
| • Fruit yoghurt | 2,00 € |
| • Bircher Müsli | 3,50 € |
| • Croissant | 1,80 € |
| • Raw vegetable sticks with various dips | 3,50 € |
| • Half a sandwich | 2,80 € |
| • Brezel | 1,80 € |
| • Brezel with butter | 2,60 € |
| • 1 pair of white sausages | 4,50 € |
| • Ingwershot | 3,00 € |
| • Conference drinks 0,2 l 0,33 l | 2,70 € |
| • Schwarzwaldsprudel still classic 0,75l | 7,50 € |
| • Pot of coffee (600 ml) | 7,50 € |